



CARRIER ACCESS ARRANGEMENTS

MCS COOKS RIVER

LAST UPDATED NOVEMBER 2018

1. Overview

MCS COOKS RIVER is committed to the highest principles and standards of safety, operational excellence, customer focus and continuous improvement.

2. Site Safety Requirements

MCS COOKS RIVER places the utmost importance on site safety for all employees, contractors and visitors who access the park. We take a stance of zero tolerance to behaviours that contribute to workplace incidents which have a negative impact to the business.

Safety is a fundamental component of operations and it will be incorporated into all business relationships and processes.

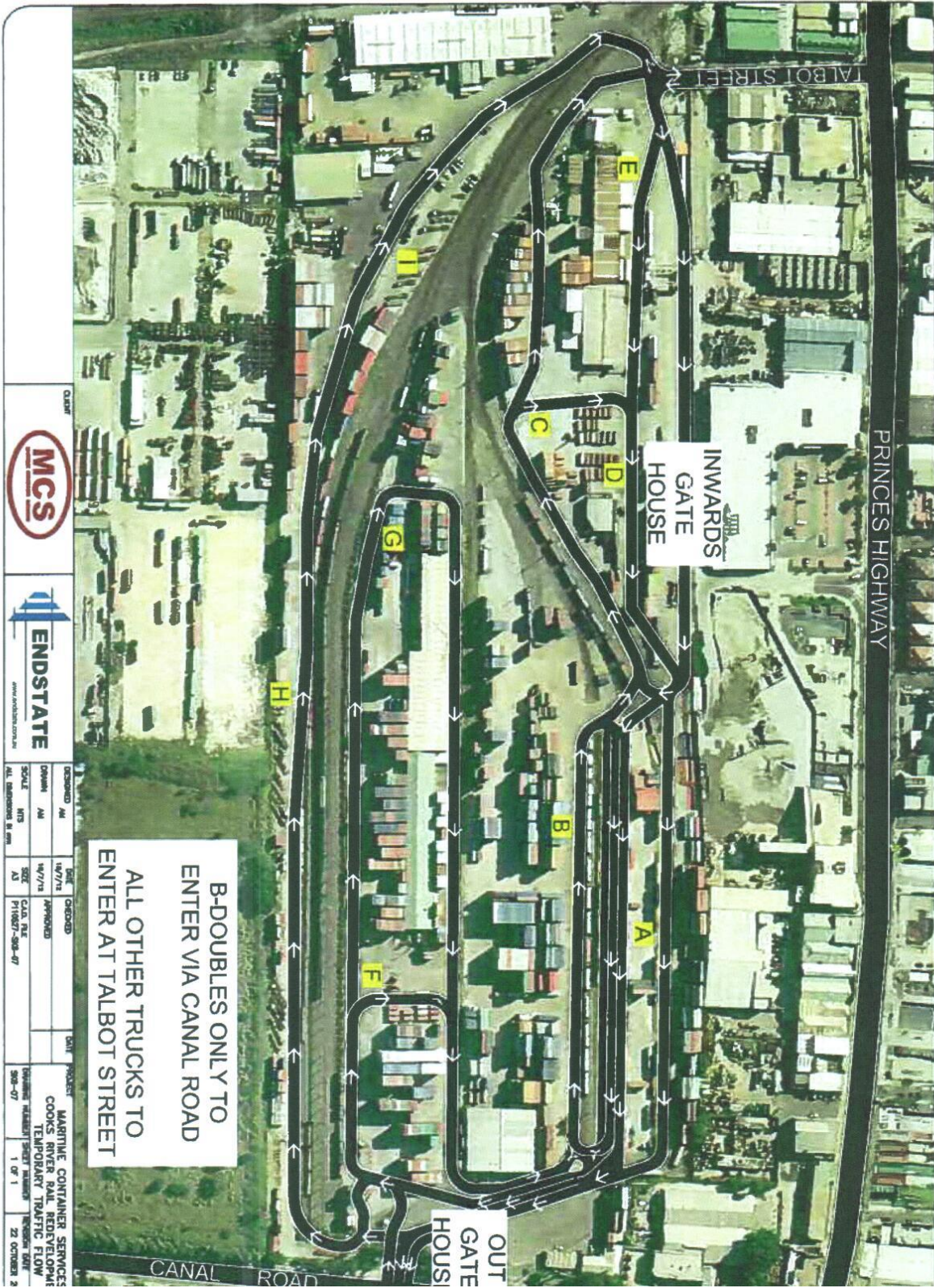
3. Personal Protective Equipment (PPE) Requirements

- Drivers entering the park are required to wear steel capped boots
- Drivers entering the park are required to wear Hi Visibility Garments with a minimum being a vest to be worn as an outer layer of clothing (Compliant to Australian Standard AS 4602)
- Drivers must be inducted

4. Traffic Management

- Truck drivers must adhere to traffic flow and follow any internal traffic signs.
- All trucks must engage their Hazard lights whilst in the Terminal
- Trucks must give way to pedestrians.
- Trucks must give way to forklifts operating in the Terminal.
- Trucks must give way to Trains operating in the Terminal.
- Pedestrians must use designated walkways at all times.
- Maximum speed limit in the Terminal is 10 km/hr.
- Truck drivers are to remain in their vehicle whilst being loaded or unloaded.
- Drivers are not permitted to perform maintenance or cleaning activities on any vehicle whilst in the Terminal.

- Drivers must be licensed to operate the truck and its configurations.
- The truck must be registered, road worthy and maintained to a condition as per NSW RMS / Manufacturers recommendations.
- Drivers must secure the twist-locks on all four corners of the container(s) prior to departing the Terminal this is to be done in the designated pinning area.
- Drivers shall not climb onto their trailers unless they are in a designated safety zone.
- Drivers are not to walk under or drive under a suspended load.
- Container pins are to be painted in either fluorescent yellow or white.
- Drivers must ensure all container locking pins are in the ready position for container loading or unloading. Damage resulting from failure to correctly position container locking pins will be the responsibility of the driver
- Changing the configuration of container pins must be done in a designated safety zone or pinning area.
- All container locking pins for all four corners of each container must be present and in working condition.
- Side loader trailers must have contrasting hi visibility markings on the trailer arms.
- All skeletal trailers must be fitted with safety chains.
- Intoxicants, illegal narcotics and persons under the influence of are not permitted in the depot.
- Any plant or property damage must be reported immediately to the office.
- Only B Double trucks can enter Canal Road
- All other trucks use Talbot Street Monday to Friday. When Talbot Street is closed, enter via Canal Road
- When entering Canal Road no right turn after passing through the boom gate. Left turn only.
- No litter to be left in Terminal
- All MCS property to be respected
- All vehicles that enter MCS could be subject to inspection



		DESIGNED	DATE	DATE	PROJECT
		AM	14/7/18	APPROVED	COOKS RIVER RAIL REDEVELOPMENT
		DRAWN	DATE	DATE	PROJECT
		AM	14/7/18	APPROVED	COOKS RIVER RAIL REDEVELOPMENT
		SCALE	SHEET	DATE	PROJECT
		1:100	A3	11/06/27-28-47	COOKS RIVER RAIL REDEVELOPMENT
		FILE NUMBER	SHEET NUMBER	REVISION DATE	PROJECT
		11-00000000-0000	1 OF 1	22 OCTOBER 2018	COOKS RIVER RAIL REDEVELOPMENT

5. Container Park Access

- Container Transport Operator (CTO) access to MCS COOKS RIVER is by pre transacted “Notification” through containerchain.com
- CTO’s will be required to have an active commercial account in containerchain.com in order to pre transact “Notifications”.

Returning an Empty Container

- All containers being returned to MCS COOKS RIVER will require a “Container Return Advice” transaction to be completed by the CTO in containerchain.com.
- All “Container Return Advice” transactions will require a “Notification” to be made by the CTO in containerchain.com.
- It is a mandatory requirement for all notifications that the truck registration number is recorded by the CTO at the time the notification is made.

Picking Up an Empty Container

- All containers being collected from MCS COOKS RIVER will require a “Container Pick-Up Advice” transaction to be completed by the CTO in containerchain.com.
- All “Container Pick-Up Advice” transactions will require a “Notification” to be made by the CTO in containerchain.com.
- It is a mandatory requirement for all notifications that the truck registration number is recorded by the CTO at the time the notification is made.

6. Notification Times information

- Notification times will be in 30 minute windows.
- Notifications will be made available for the remainder of the current day, and the entire next business day.
- Notifications are required to be made a minimum of 1 hour prior to the commencement of the nominated notification window.

7. Container Fees

- A Container Fee is applicable for each “Notification”.
- The Container Fee applicable for MCS COOKS RIVER is \$20.00 per container.
- Notifications outside normal business hours will have to pre-arranged with MCS management, notification rate for after hours will be \$22.50 per container.
- The Container fee will be reviewed periodically.
- The Container Fee above is exclusive of GST.

8. Truck Arrival Procedure

- Based on Safety and operational considerations, MCS COOKS RIVER has an expectation that trucks will arrive during the nominated “Notification Window”.

- When a truck driver arrives at MCS COOKS RIVER's container control office, the driver will be required to quote one of the following: truck registration number, notification number(s), release number or container number to the Container Controller. This information is used to identify and activate the transaction in the site operating system. Upon verification of a valid Notification, the truck driver will then be directed on how to proceed. Truck drivers should ask for a site map if unsure of the Terminal layout.
- If a truck arrives at MCS COOKS RIVER more than 30 minutes prior to the start of the nominated "Notification Window", the carrier will incur an "Off Window Surcharge" of \$18.00 per booking.
- If a truck arrives at MCS COOKS RIVER more than 60 minutes after the end of the nominated "Notification Window", the carrier will incur an "Off Window Surcharge" of \$18.00 per booking.
- If a truck is serviced during the nominated "Notification Window", the Containerchain system will record the performance of the CTO in respect of that "Notification" as "On Time".
- If a truck is serviced before the commencement of the nominated "Notification Window", the Containerchain system will record the performance of the CTO in respect of that "Notification" as "Early".
- If a truck is serviced after the expiration of the nominated "Notification Window", the Containerchain system will record the performance of the CTO in respect of that "Notification" as "Late"

9. Failure to Arrive for a Notification

- If a truck fails to arrive on the day of the "Notification", for reporting purposes, the performance of the CTO in respect of that "Notification" will be reported "Unutilised".
- "Un-utilised Notifications" will be charged the "Container Fee"

10. Arrival Without a Notification

- If a truck arrives at MCS COOKS RIVER without a "Notification" it will be at the Terminal Managers/Supervisors discretion if the truck is serviced.

11. Cancelled Notifications

A "Notification" can be cancelled by a CTO up to 1 hour prior to the commencement of a "Notification Window" and the "Container Fee" will not be charged.

If a "Notification" is cancelled by a CTO after this time the "Container Fee" will still be charged.

MCS COOKS RIVER may also be required to cancel a "Notification" on behalf of a CTO due to internal operational issues. If this occurs the CTO will be advised by email and the corresponding "Container Fee" will not be charged

12. Invoicing

- Container Fees will be invoiced to CTO's by containerchain.com
- Invoices are raised monthly and represent all activity for the preceding month.
- Invoice payment terms are fourteen days from invoice
- Outstanding invoices will result in a CTO's Containerchain account being suspended
- Reconnection of a suspended account will attract a reconnection fee of \$100.00 + GST

13. Dispute Resolution

- If a Notification is not serviced due to a contributing factor from MCS COOKS RIVER, the CTO is required to log the issue with the Containerchain Support Team within 60 minutes of the truck departing MCS COOKS RIVER. This is to enable any potential invoice dispute regarding the "Notification" to be addressed. Disputed invoices are to be raised with the Containerchain Support Team.

14. Liability and Indemnity

The carrier must indemnify and keep indemnified MCS COOKS RIVER in respect of any loss or damage or death or injury to any person as a consequence of:

- (a) Any breach of this arrangement by the carrier, its drivers, agents or contractors;
- (b) Any negligent act or omission or wilful misconduct of the carrier, its drivers, agents or contractors; and
- (c) Any damage to MCS COOKS RIVER property where such damage is the fault of the carrier, its drivers, agents or contractors,

Except to the extent that such loss or damage is caused by a breach of this arrangement or an act or omission constituting negligence or wilful misconduct by MCS COOKS RIVER, MCS COOKS RIVER must indemnify and keep indemnified the carrier in respect of and loss or damage or death or injury to any person as a consequence of:

- (a) Any breach of this arrangement by MCS COOKS RIVER;
- (b) Any negligent act or omission or wilful misconduct of MCS COOKS RIVER; and
- (c) Any damage to the carrier's property where such damage is the fault of MCS COOKS RIVER except to the extent that such loss or damage is caused by a breach of this arrangement or an act or omission constituting negligence or wilful misconduct by the carrier, its drivers, agents or contractors.

15. Fatigue Management

- Carriers are required by law to ensure drivers do not exceed their maximum regulated hours for driving and working. MCS COOKS RIVER will assist in every way to notify carriers of current and possible delays. These notifications will be sent via our Broadcast Alert system, which sends emails and SMS messages to registered CTO's.
- All carriers are responsible for managing their drivers' hours and carriers must change over drivers who have worked their maximum number of hours. If the carrier is unable to change drivers then the carrier must withdraw and move the truck away from MCS COOKS RIVER

16. Current Depot Opening Hours

Monday to Friday 0500-2100

Depot opening hours are subject to review and additional opening hours are subject to demand.

17. Alterations to these Carrier Access Arrangements

- MCS COOKS RIVER reserves the right to alter these Carrier Access Arrangements.
- CTO's will be advised of alterations to this arrangement by email and all alterations will be posted on the Containerchain website.